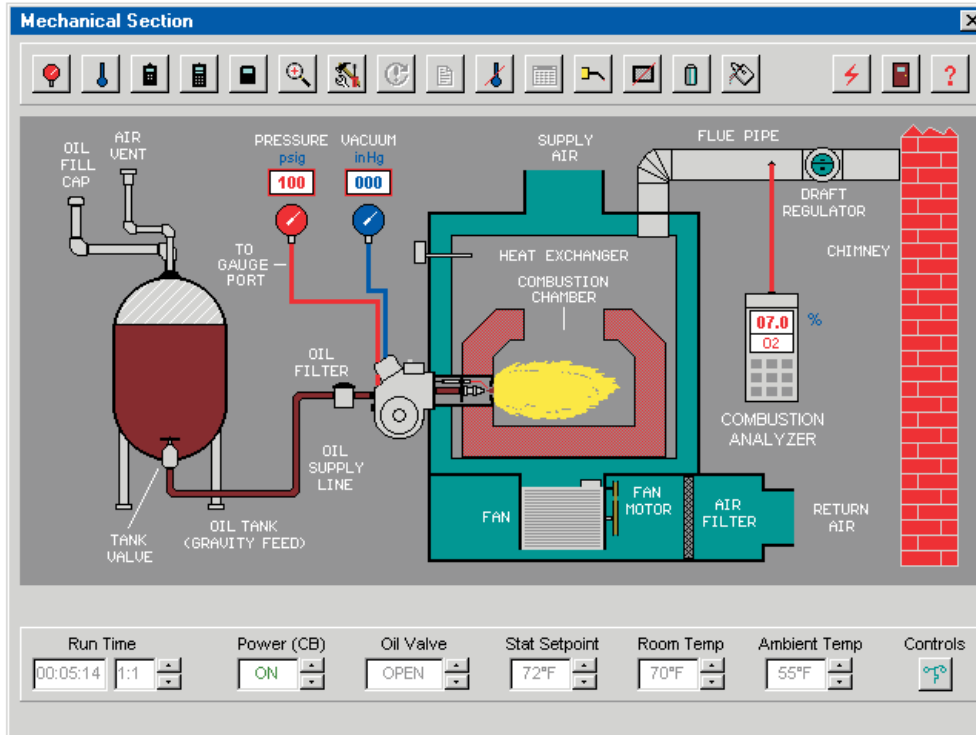


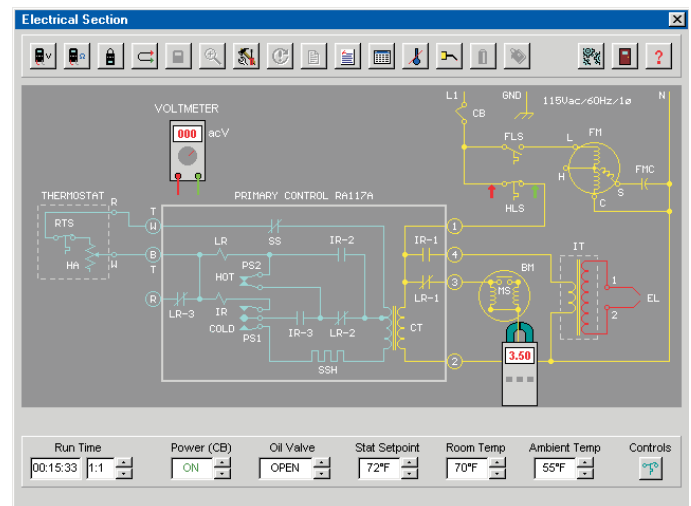
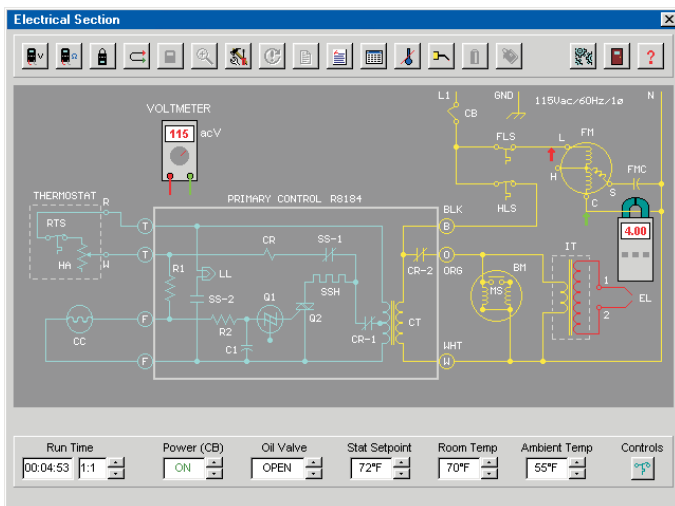
OIL FURNACE SIMULATOR SIMUOIL™



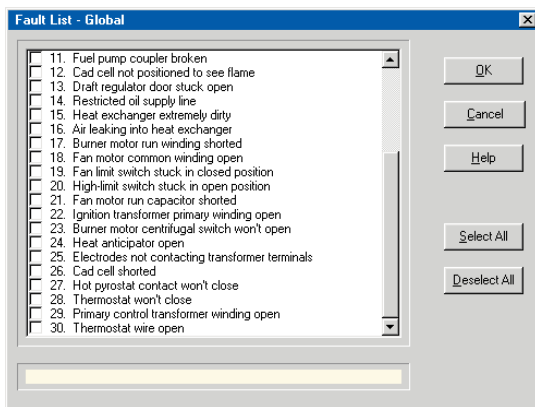
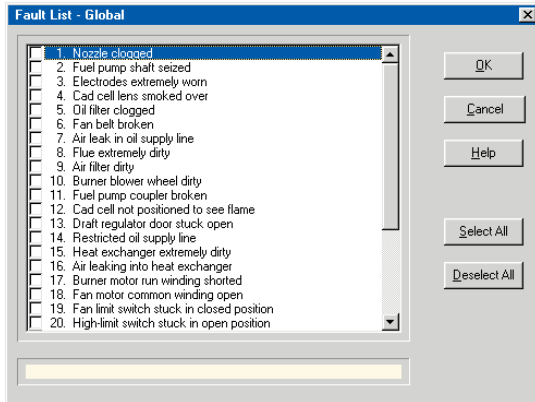
SIMUOIL™ simulates four common configurations of *generic* oil furnaces. These include two types of **primary controls**, *cad cell* and *stack-mounted*, as well as two types of **oil supply systems**, *one-pipe gravity feed* and *2-pipe buried tank*.

Animated mechanical and electrical schematic diagrams of the simulated oil furnace are provided in “real-time”. The **mechanical diagrams** show the flame, fuel flow, and blower rotation. In the **electrical ladder diagrams**, the controls and switch

contacts constantly change state as the furnace operates. The trainee can “zoom” into the furnace to visually inspect various components, including the electrodes, cad cell, and fan belt, and check for dirty filters, heat exchanger, and flue pipe. Room and ambient temperatures, room thermostat, limit switches, burner air shutter, draft regulator, fuel pump pressure, and electrodes are all adjustable. Room and ambient temperatures, in either *Fahrenheit* or *Celsius*, are constantly updated and displayed. Up to 30 commonly encountered



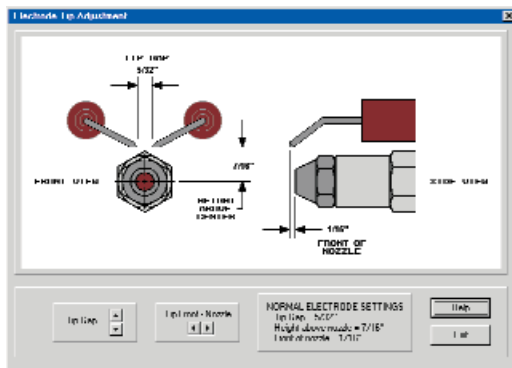
OIL FURNACE SIMULATOR *SIMUOIL*™



mechanical and electrical faults may be selected, as shown in the *Fault Lists* above.

SIMUOIL provides easy-to-use “point-and-click” selection of meters and test points, which are saved to an *Instrument Log* to monitor the users’ troubleshooting skill. Temperatures may be displayed in either *Fahrenheit* (°F) or *Celsius* (°C), and pressures may be displayed in either *imperial* (psig/in. w.c.) or *metric* (kPa). The on-screen instruments include:

- Draft gauge
- Fuel gauge
- Pressure gauge
- Vacuum gauge
- Thermometers
- Combustion analyzer
- Smoke tester
- Voltmeter
- Ohmmeter
- Clamp-on ammeter



- | | |
|--------------------|----------------------|
| Burner | Ignition transformer |
| Fuel pump | Control transformer |
| Nozzle | Electrodes |
| Combustion chamber | Cad cell |
| Heat exchanger | Pyrostat |
| Draft regulator | Safety switch |
| Flue pipe | Fan limit switch |
| Air filter | High-limit switch |
| Oil tank valve | Centrifugal switch |
| Primary control | Room thermostat |
| Fan motor | Heat anticipator |
| Burner motor | Motor run capacitor |
| | Circuit breaker |

SIMUOIL provides testing and troubleshooting of the devices listed above, which are commonly found in oil furnaces.

SYSTEM REQUIREMENTS

SIMUOIL for Windows requires the following minimum IBM compatible PC computer:

- Pentium, Core, or equivalent processor (32 or 64-bit)
- Minimum RAM required by operating system
- Windows 95, 98, 2000, 2003, 2008, NT, Me, XP, Vista, or Windows 7 (32 or 64-bit)
- VGA/SVGA display
- Hard drive, 18MB available disk space
- Pointing device, such as Windows-compatible mouse

SIMUOIL network version is compatible with Novell and Windows NT/XP/Vista/7/2000/Server 2003/Server 2008



ORDERING INFORMATION

SIMUOIL™ Oil Furnace Simulator Version 5.2

MO-500	Stand-alone computer version, single license	\$795.00
MO-560	Network version, 25-user (seat) license	1,795.00
MO-570	Network version, 50-user (seat) license	2,395.00
TO-500	<i>OILINST</i> ™ Instructor Interface, Version 5.1	195.00

For further prices and ordering information, please see Page 16

ORDERING INFORMATION

METHODS OF ORDERING

MAIL

Simutech Systems, Inc.
PO Box 7212
Beaverton OR 97007 (U.S.A.)

PHONE

(800) 648-6209 (USA & Canada)
(503) 649-9076
Hours: 8:00 am to 5:00 pm Pacific Time

FAX

(503) 649-8972

ON-LINE STORE / E-MAIL

www.simutechsystems.com
sales@simutechsystems.com

METHODS OF PAYMENT

U.S. CUSTOMERS

- Purchase Order from government agency, school, or corporation (OAC), Net 30-days
- Visa, MasterCard, or American Express
- Prepaid by check

CANADA & INTERNATIONAL CUSTOMERS

- Purchase Order from government agency or school, Net 30-days, payable in U.S. funds
- Visa, MasterCard, or American Express
- Prepaid by International Bank Check, payable in U.S. funds

SHIPPING

All orders are shipped *FOB shipping point* and a shipping charge is added to invoice. Shipment is normally via *UPS ground* in USA and *UPS Air* to Canada and international. *Next-day* or *second-day air* is available upon request. For Canada and international orders, GST, local taxes, and duty are not included in our prices.

Orders are normally shipped within 24-hours from receipt

SYSTEM CONTENTS

Each simulator system includes the following:

- CD-ROM
- User's Manual
- Instructor's Manual
- Technical Support, unlimited, with toll-free number (USA and Canada)

- (1) Additional licenses are required if simulators are installed and used on more than one stand-alone computer at same campus or training facility
- (2) Network versions are valid for installation on a LAN server at one campus or training facility, for concurrent use by maximum licensed users
- (3) Network versions for more than 50 users are also available

Prices are subject to change without notice

Note: Simutech reserves the right to refuse any order, including shipment to countries where prohibited by U.S. export laws or lacking proper international copyright protection.

Export, reshipment, or resale is prohibited without prior written permission, subject to U.S. export laws.



PRICE LIST – MULTIPLE LICENSES FOR STAND-ALONE COMPUTERS

PRODUCT	5 LICENSES	10 LICENSES	15 LICENSES	20 LICENSES
<i>SIMUAIR™</i>	\$1,095.00	\$1,595.00	\$1,795.00	\$1,995.00
<i>SIMUPUMP™</i>	1,295.00	1,795.00	1,995.00	2,195.00
<i>SIMUREFR™</i>	1,295.00	1,795.00	1,995.00	2,195.00
<i>SIMUMKT™</i>	1,695.00	2,195.00	2,395.00	2,595.00
<i>SIMUGAS™</i>	1,295.00	1,795.00	1,995.00	2,195.00
<i>SIMUOIL™</i>	1,495.00	1,995.00	2,195.00	2,395.00
<i>SIMUHYDRO™</i>	1,495.00	1,995.00	2,195.00	2,395.00

Prices shown include a stand-alone single-license version on CD-ROM (e.g. "5-Licenses" includes a single-license plus 4 additional licenses)

Quantity of licenses can not be combined for multiple products

For greater than 20 licenses or other quantities, please contact us for a quotation

Prices shown are in US Dollars

© 2011 Simutech Systems, Inc