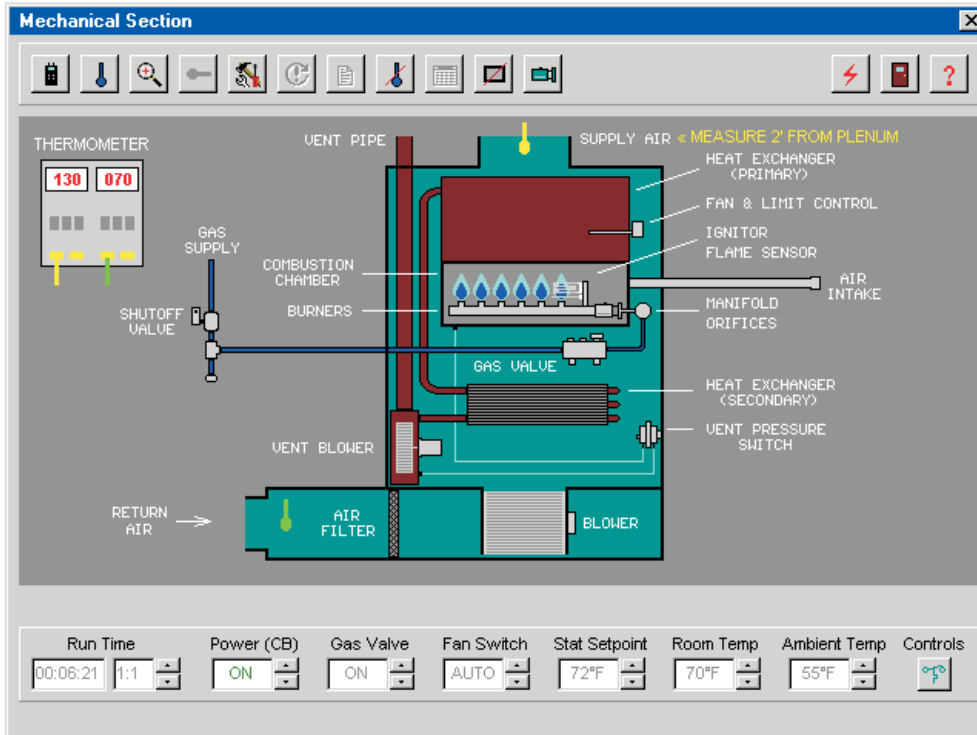
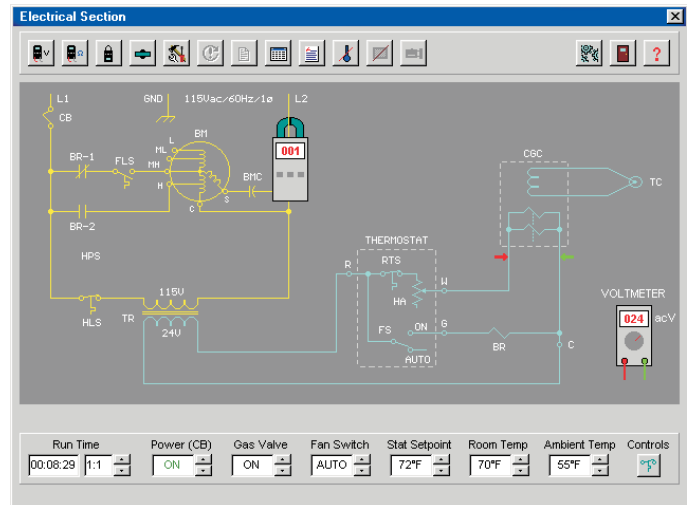
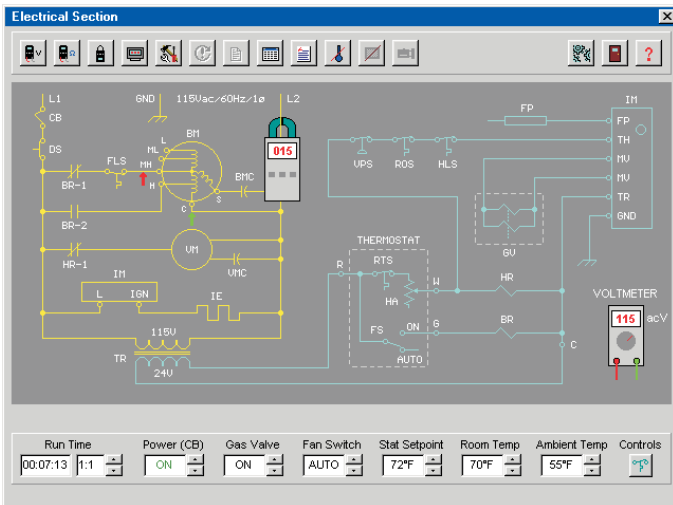


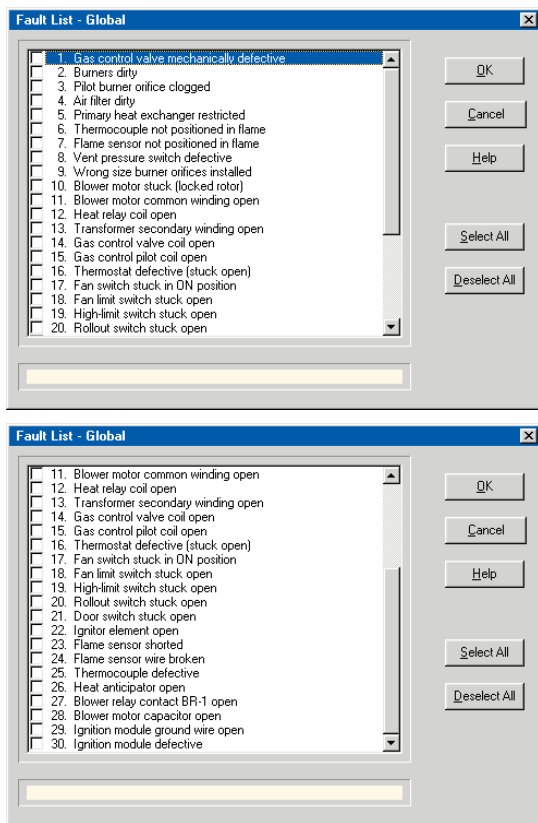
GAS FURNACE SIMULATOR *SIMUGAS*™



SIMUGAS™ simulates two *generic* versions of gas furnaces. These include a **high-efficiency condensing furnace** with *hot-surface ignition (HSI)*, and a **standard-efficiency furnace** with **standing pilot ignition**. Either *natural gas* or *liquid-petroleum (LP) gas* may be selected for simulation. Room and ambient temperatures, room thermostat, burner air-shutters, fan limit, high limit, heat anticipator, and manifold pressure are all adjustable. The room and ambient temperatures, in either *Fahrenheit* or *Celsius*, are constantly updated and displayed.

Animated mechanical and electrical schematic diagrams of the simulated gas furnace are provided in “real-time”. The **mechanical diagrams** show the burner flames, gas flow, and blower rotation. In the **electrical ladder diagrams**, the controls and switch contacts constantly change state as the system operates. The trainee can “zoom” into the furnace to visually inspect various components, including checking for a dirty air filter or heat exchanger, and the position of the flame sensor. Typical types of burner flames are also shown. Up to 30 commonly

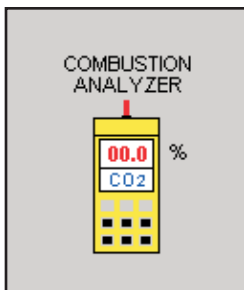




encountered mechanical and electrical faults may be selected, as shown in the *Fault Lists* above.

SIMUGAS provides easy-to-use “point-and-click” selection of meters and test points, which are saved to an *Instrument Log* to monitor the users’ troubleshooting skill. Temperatures may be displayed in either *Fahrenheit* (°F) or *Celsius* (°C), and pressures may be displayed in either *imperial* (in. w.c.) or *metric* (kPa). The on-screen test instruments include:

- Manometer
- Thermometers
- Combustion analyzer
- Ignition module tester
- Voltmeter
- Millivoltmeter
- Ohmmeter
- Clamp-on ammeter
- Microammeter



- | | |
|--------------------------|----------------------|
| Primary heat exchanger | Blower relay |
| Secondary heat exchanger | Heat relay |
| Combustion chamber | Gas control valve |
| Manifold | Ignitor element |
| Burners | Ignition module |
| Orifices | Gas control coil |
| Air filter | Flame sensor |
| Gas valve | Run capacitor |
| Vent pipe | Room thermostat |
| Draft hood | High limit switch |
| Pilot burner | Fan switch |
| Thermocouple | Vent pressure switch |
| Blower motor | Rollout switch |
| Vent blower motor | Door switch |
| Transformer | Circuit breaker |

SIMUGAS provides testing and troubleshooting of the devices listed above, which are commonly found in gas furnaces.

SYSTEM REQUIREMENTS

SIMUGAS for Windows requires the following minimum IBM compatible PC computer:

- Pentium, Core, or equivalent processor (32 or 64-bit)
- Minimum RAM required by operating system
- Windows 95, 98, 2000, 2003, 2008, NT, Me, XP, Vista, or Windows 7 (32 or 64-bit)
- VGA/SVGA display
- Hard drive, 17MB available disk space
- Pointing device, such as Windows-compatible mouse

SIMUGAS network version is compatible with Novell and Windows NT/XP/Vista/7/2000/Server 2003/Server 2008



ORDERING INFORMATION

SIMUGAS™ Gas Furnace Simulator Version 5.2

MF-500	Stand-alone computer version, single license	\$695.00
MF-560	Network version, 25-user (seat) license	1,695.00
MF-570	Network version, 50-user (seat) license	2,295.00
TF-500	<i>GASINST</i> ™ Instructor Interface, Version 5.1	195.00

For further prices and ordering information, please see Page 16

ORDERING INFORMATION

METHODS OF ORDERING

MAIL

Simutech Systems, Inc.
PO Box 7212
Beaverton OR 97007 (U.S.A.)

PHONE

(800) 648-6209 (USA & Canada)
(503) 649-9076
Hours: 8:00 am to 5:00 pm Pacific Time

FAX

(503) 649-8972

ON-LINE STORE / E-MAIL

www.simutechsystems.com
sales@simutechsystems.com

METHODS OF PAYMENT

U.S. CUSTOMERS

- Purchase Order from government agency, school, or corporation (OAC), Net 30-days
- Visa, MasterCard, or American Express
- Prepaid by check

CANADA & INTERNATIONAL CUSTOMERS

- Purchase Order from government agency or school, Net 30-days, payable in U.S. funds
- Visa, MasterCard, or American Express
- Prepaid by International Bank Check, payable in U.S. funds

SHIPPING

All orders are shipped *FOB shipping point* and a shipping charge is added to invoice. Shipment is normally via *UPS ground* in USA and *UPS Air* to Canada and international. *Next-day* or *second-day air* is available upon request. For Canada and international orders, GST, local taxes, and duty are not included in our prices.

Orders are normally shipped within 24-hours from receipt

SYSTEM CONTENTS

Each simulator system includes the following:

- CD-ROM
- User's Manual
- Instructor's Manual
- Technical Support, unlimited, with toll-free number (USA and Canada)

- (1) Additional licenses are required if simulators are installed and used on more than one stand-alone computer at same campus or training facility
- (2) Network versions are valid for installation on a LAN server at one campus or training facility, for concurrent use by maximum licensed users
- (3) Network versions for more than 50 users are also available

Prices are subject to change without notice

Note: Simutech reserves the right to refuse any order, including shipment to countries where prohibited by U.S. export laws or lacking proper international copyright protection.

Export, reshipment, or resale is prohibited without prior written permission, subject to U.S. export laws.



PRICE LIST – MULTIPLE LICENSES FOR STAND-ALONE COMPUTERS

PRODUCT	5 LICENSES	10 LICENSES	15 LICENSES	20 LICENSES
<i>SIMUAIR™</i>	\$1,095.00	\$1,595.00	\$1,795.00	\$1,995.00
<i>SIMUPUMP™</i>	1,295.00	1,795.00	1,995.00	2,195.00
<i>SIMUREFR™</i>	1,295.00	1,795.00	1,995.00	2,195.00
<i>SIMUMKT™</i>	1,695.00	2,195.00	2,395.00	2,595.00
<i>SIMUGAS™</i>	1,295.00	1,795.00	1,995.00	2,195.00
<i>SIMUOIL™</i>	1,495.00	1,995.00	2,195.00	2,395.00
<i>SIMUHYDRO™</i>	1,495.00	1,995.00	2,195.00	2,395.00

Prices shown include a stand-alone single-license version on CD-ROM (e.g. "5-Licenses" includes a single-license plus 4 additional licenses)

Quantity of licenses can not be combined for multiple products

For greater than 20 licenses or other quantities, please contact us for a quotation

Prices shown are in US Dollars

© 2011 Simutech Systems, Inc